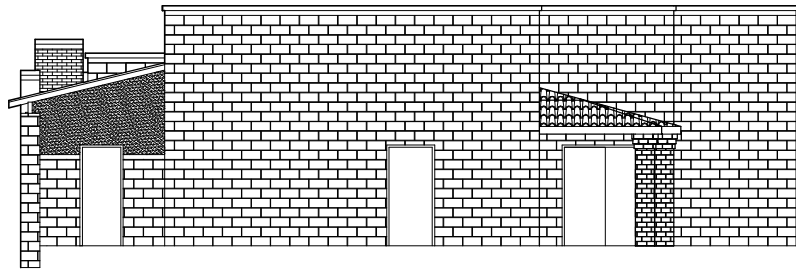
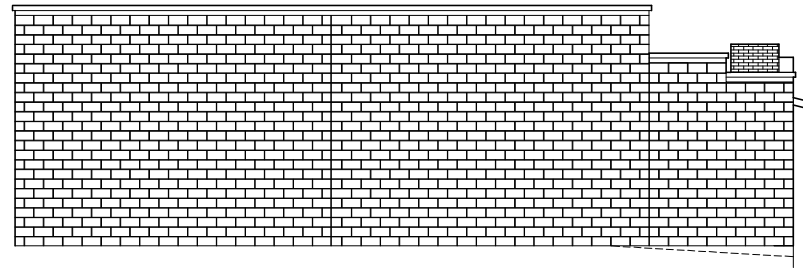


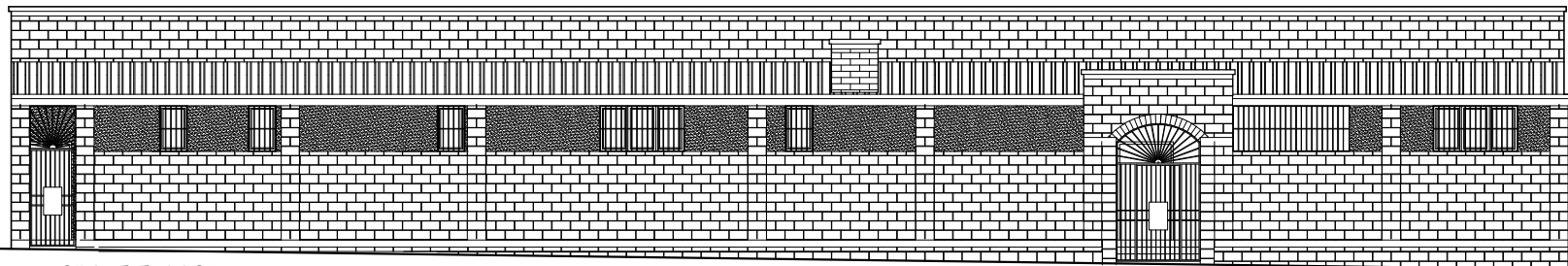
1 SOUTH ELEVATION
1/4" = 1'-0"



2 WEST ELEVATION
1/4" = 1'-0"



3 EAST ELEVATION
1/4" = 1'-0"



4 NORTH ELEVATION
1/4" = 1'-0"

DATE	ELEVATIONS	SHEET
DATE	7/28/09	2
SCALE	1/4" = 1'-0"	2 OF 5